

### Features

- The Piston Type pulse valves are specially designed for Dust Collector Service applications, combining high flow, long life and extremely fast opening to produce reliable and economical operation.
- This is Direct Mount High flow, Spring less construction with a Special Piston form assembly that gives a unique operating feature required for dust collector service applications.
- Various Solenoid Enclosure Options available. Weatherproof option for IP67 application and Explosion proof for use in potentially explosive atmospheres (gas & dust) according to directive ATEX 94/9/EC and CCC.
- Easy installation directly into header tank.
- Higher harsh environment resistance & better appearance.



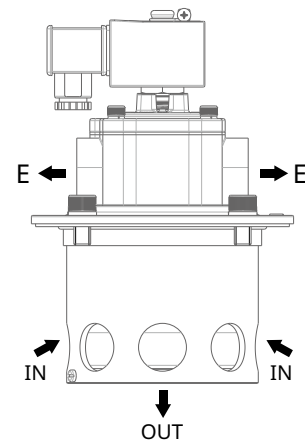
### General Valve Information

**Differential pressure** 1.5~6 bar [1 bar = 100kPa]

Fluids	Temperature Range	Diaphragm	Piston
Air	-20°C ~ +85°C	TPE (Hytrel)	Nylon 66

#### Materials in Contact with Fluid

<b>Body</b>	Stainless steel 316L
<b>Cylinder</b>	Stainless steel
<b>Core tube</b>	Stainless steel
<b>Core and plugnut</b>	Stainless steel
<b>Springs</b>	Stainless steel
<b>Sealing Material</b>	NBR & Polyurethane
<b>Diaphragm</b>	TPE (Hytrel)
<b>Piston</b>	Nylon 66
<b>Shading coil</b>	Copper
<b>Coil insulation class</b>	F & H
<b>Connector</b>	Spade plug
<b>Connector specification</b>	ISO4400
<b>Electrical safety</b>	IEC335



## Electrical Characteristics

Enclosure	Coil	AC (~)			DC(=)
		Inrush(~) (VA)	Holding(~) (VA)	Wattage (W)	Wattage (W)
WSNF	EST-MXX	55	23	10.5	19.7
WS	EST-MXX	55	23	10.5	19.7
SC	MXX	50	25	10.1	11.6

## Temperature Range

Enclosure	Coil	Insulation Class	Operator AC/DC Min. Ambient Temp. °C	Operator AC(~) Max. Ambient Temp. °C					Operator DC(=) Max. Ambient Temp. °C					PV-Ambient Temperature Range	
				Surface Temperature			IP65	IP67	Surface Temperature			IP65	IP67	Min. Temp	Max. Temp
				T6 - IP66/ IP67	T5 - IP66/ IP67	T4 - IP66/ IP67			T6 - IP66/ IP67	T5 - IP66/ IP67	T4 - IP66/ IP67				
				85°C	100°C	135°C			85°C	100°C	135°C				
WSNF	EST-MXX	F (155°C)	-60°	+40°C	+60°C	+75°C	-	-	+25°C	+40°C	+60°C	-	-	-20°C	+85°C
		H (180°C)		+40°C	+60°C	+100°C	-	-	+40°C	+60°C	+75°C	-	-		
WS	EST-MXX	F (155°C)	-40°	-	-	-	-	+75°C	-	-	-	-	+25°C		
		H (180°C)		-	-	-	-	+100°C	-	-	-	-	+50°C		
SC	MXX	F (155°C)	-20°	-	-	-	+85°C	+85°C	-	-	-	+85°C	+85°C		
		H (180°C)		-	-	-			-	-	-				

### Valve temperature range:

The valve temperature range is determined by the selected seal material, the temperature range for proper operation of the valve and sometimes by the fluid (e.g. steam).

### Operator ambient temperature range:

The operator ambient temperature range is determined by the selected power level and the safety code.

### Total temperature range:

The temperature range of the complete solenoid valve is determined by the limitations of both temperature ranges above.

## Specifications

Pipe Size (inch)	Orifice Size (mm)	Flow Coefficient Kv (m³/h) (l/min)		Operating pressure differential (bar) Min. Max.		Conduit Size	LED	Surge Suppression Diode (DC only)	Power Coil (W) AC DC		Enclosure	Catalog number	Type
3	79	380	6300	1.5	6	-			10.1	11.6	SC	X353521138x01xx	1
						-	•		10.1	11.6		X353521138x02xx	
						1/2" NPT			10.5	-	WS	X353521138x04xx	2
						1/2" NPT		•	-	19.7		X353521138x05xx	
						M20 x 1.5			10.5	-		X353521138x06xx	
						M20 x 1.5		•	-	19.7		X353521138x07xx	
						1/2" NPT			10.5	-	WSNF	X353521138x08xx	3
						1/2" NPT		•	-	19.7		X353521138x09xx	
						M20 x 1.5			10.5	-		X353521138x10xx	
						M20 x 1.5		•	-	19.7		X353521138x11xx	

## How to Order

X353521138 X 01 XX

### Option Codes:

**0** = General Purpose - IP65(for SC)  
**1** = INMETRO(for WSNF)  
**2** = KOSHA(for WSNF)  
**3** = CUTR(for WSNF)  
**4** = CCC(for WSNF)  
**5** = PESO(for WSNF)  
**6** = ATEX(for WSNF)  
**9** = TS(for WSNF)  
**B** = General Purpose - IP67(for SC & WS)  
**Y** = Spare Kit  
**Z** = Rebuild Kit(Spare Kit + SBSA, only for SC & WS)

### Voltage Codes \* :

**F1** = 24 DC  
**F8** = 230/50 AC  
**FE** = 110/50 AC  
**FT** = 115/50 AC  
**H1** = 24 DC  
**H8** = 230/50 AC  
**HE** = 110/50 AC  
**HT** = 115/50 AC

\* Other voltages & 60Hz on request

## Installation

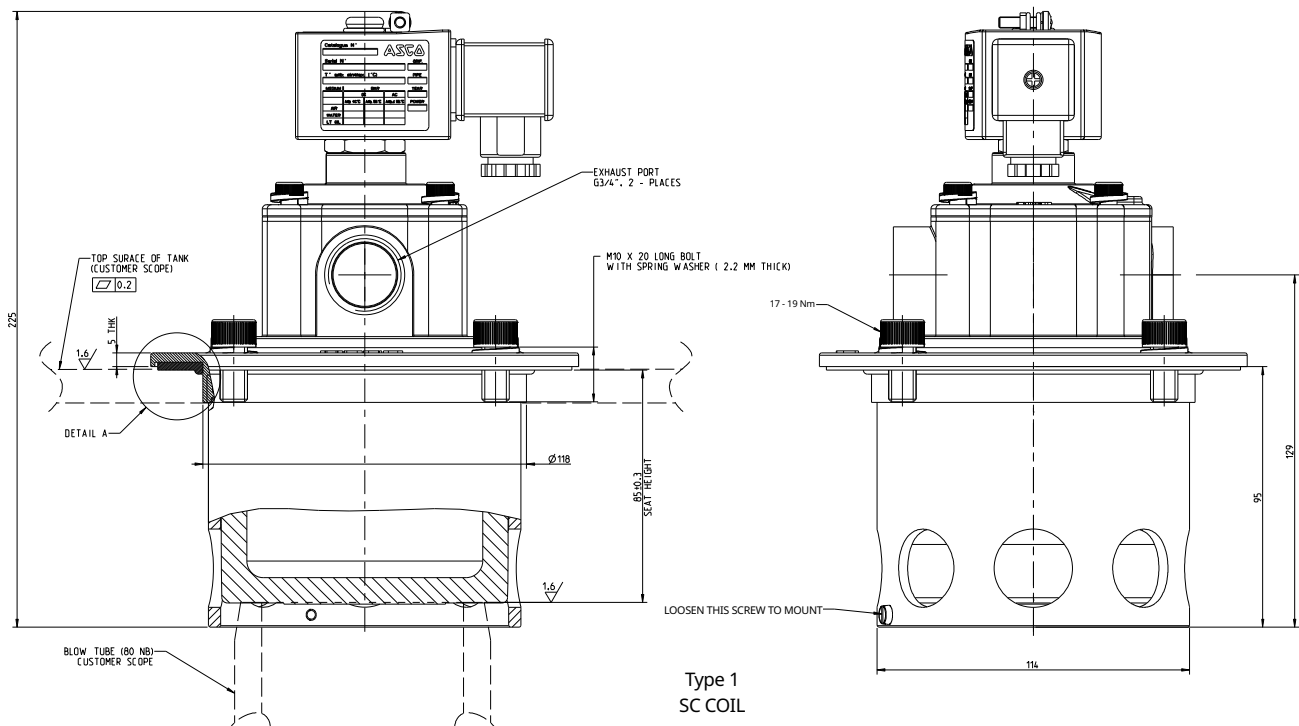
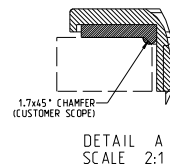
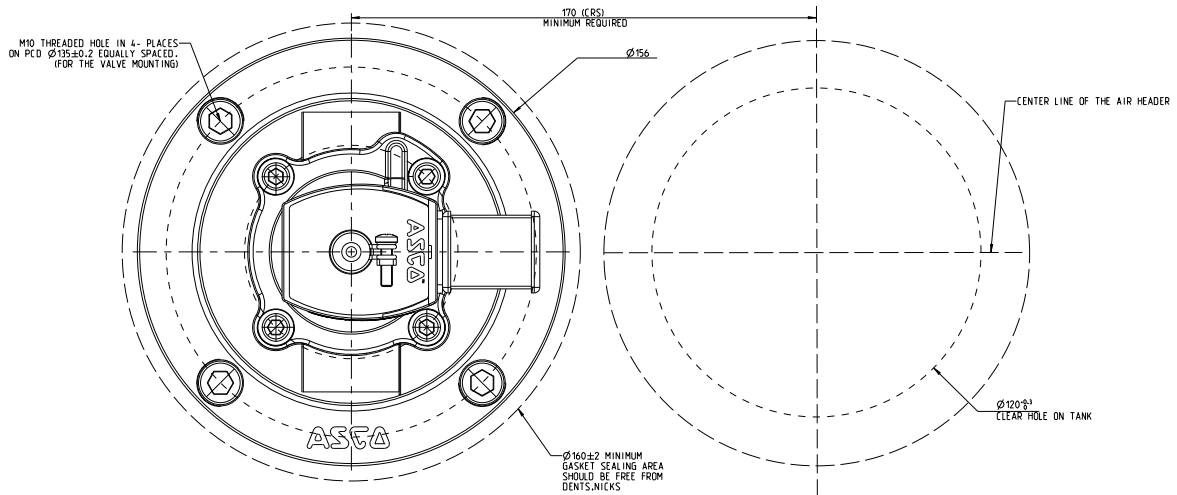
- The valves Must be mounted with solenoid vertical and upright position only.
- Pipe connection identifier is 3" TM ( Tank Mounted ).
- Installation/maintenance instruction are included with each valve.
- Spare Parts Kit and replacement Coils are available.

# ASCO™ Pulse Valves

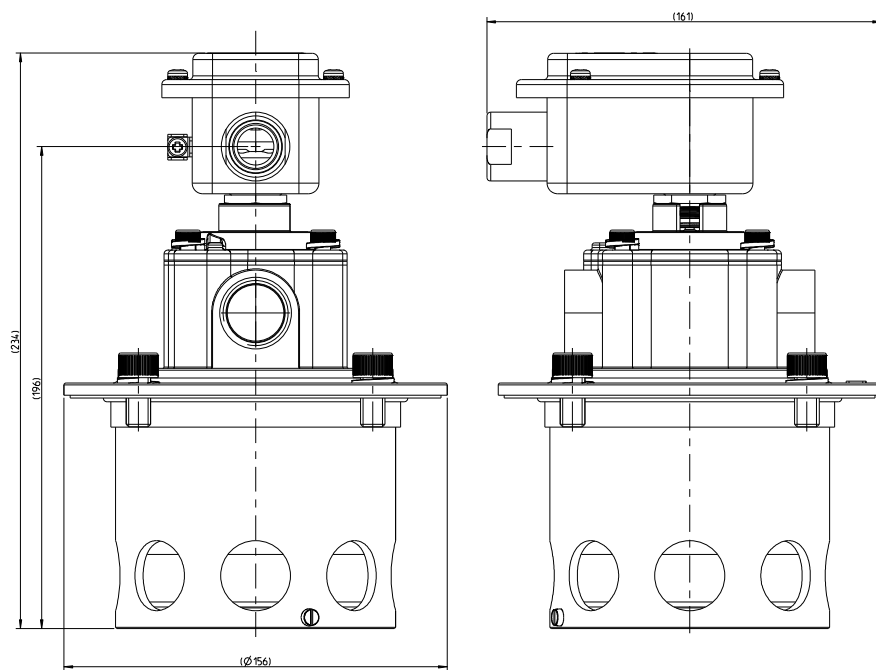
Immersion Piston Type size 3" SS

Series  
353

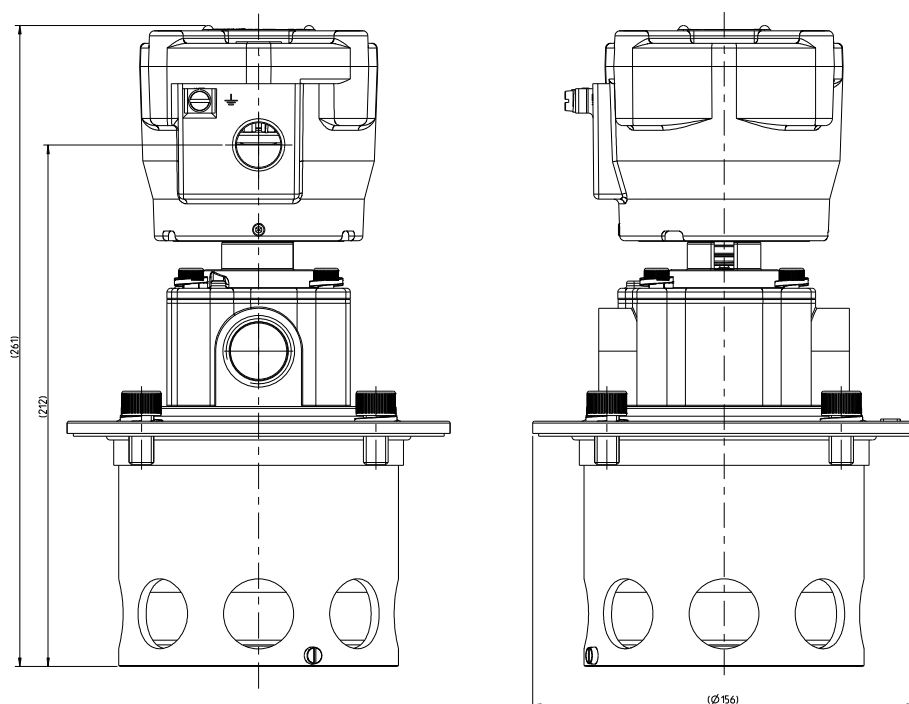
## Dimensions: mm



## Dimensions: mm



Type 2  
WS ENCLOSURE



Type 3  
WSNF ENCLOSURE