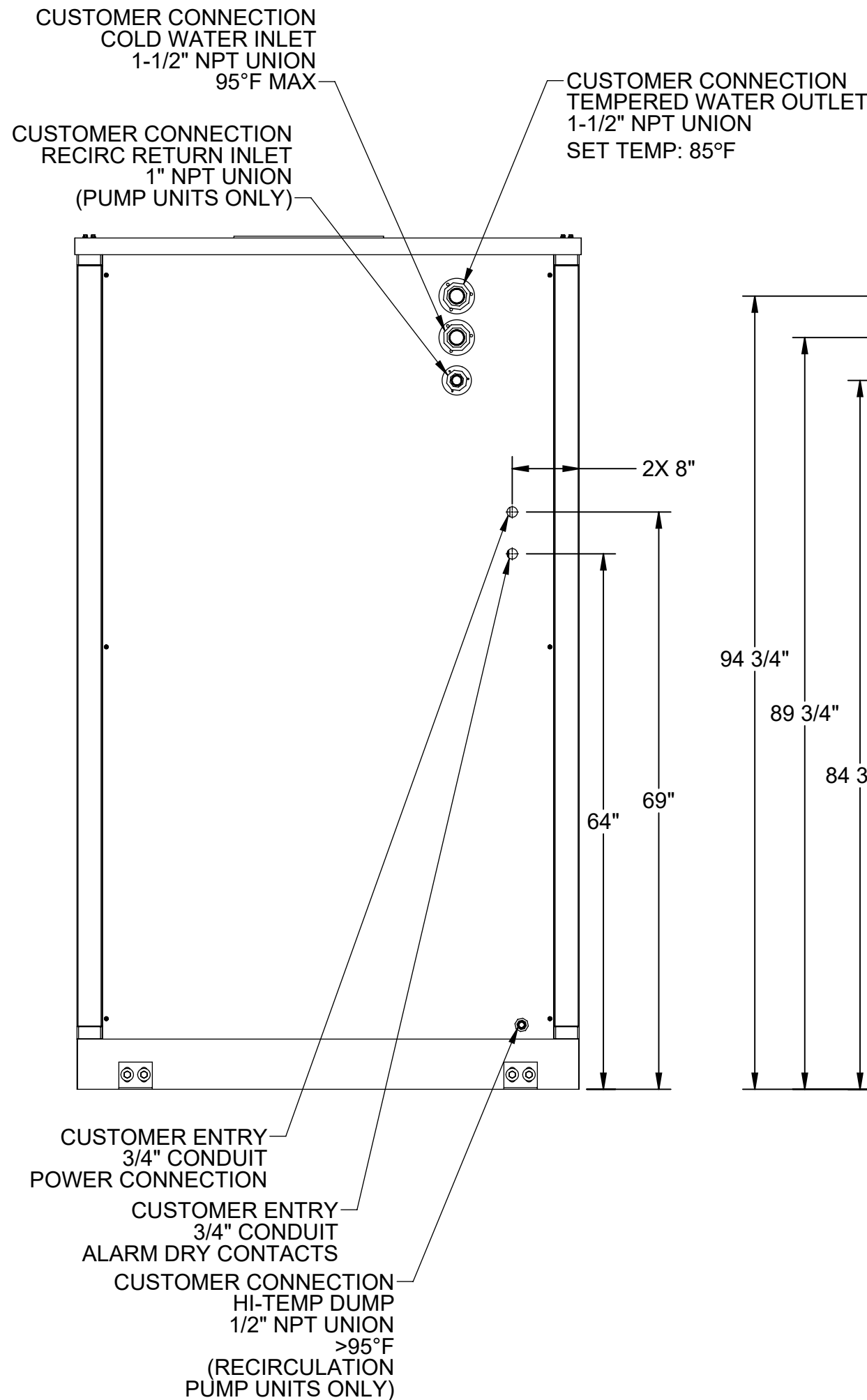


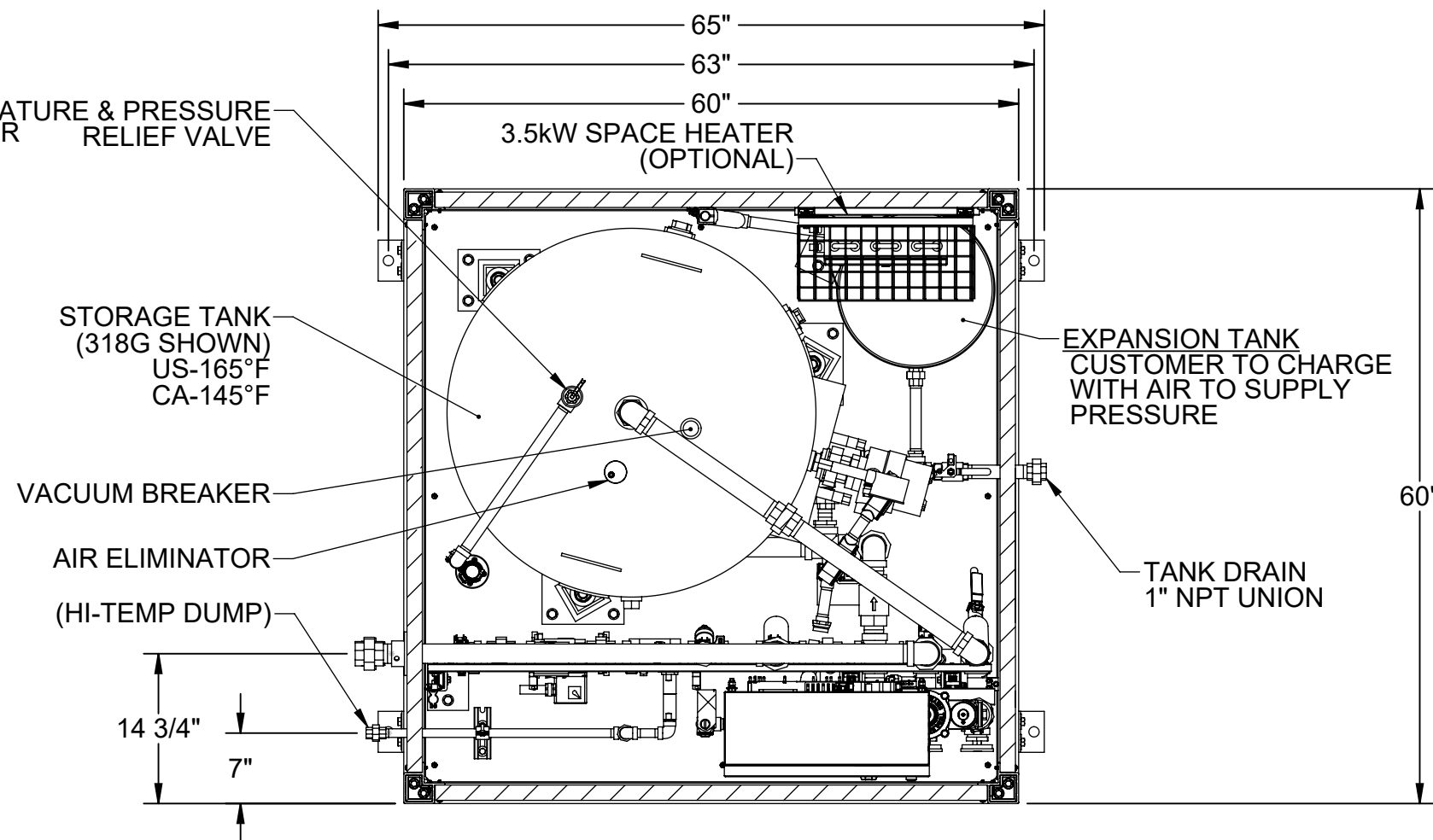
NOTES:

1. DIMENSIONS IN INCHES.
2. ALL TOLERANCES: $\pm 1/2"$
3. ESTIMATED WEIGHT:
DRY: 1300 LB
WET: 4000 LB
4. AREA CLASSIFICATION: ORDINARY
5. AVAILABLE AMBIENT TEMPERATURE RANGES:
-50°F-104°F, 32°F-104°F
6. RATINGS: CONFIGURABLE WITH TYPE 4/4X JUNCTION BOX FOR INDOOR
OR OUTDOOR LOCATION
7. NOT ALL FEATURES ARE STANDARD

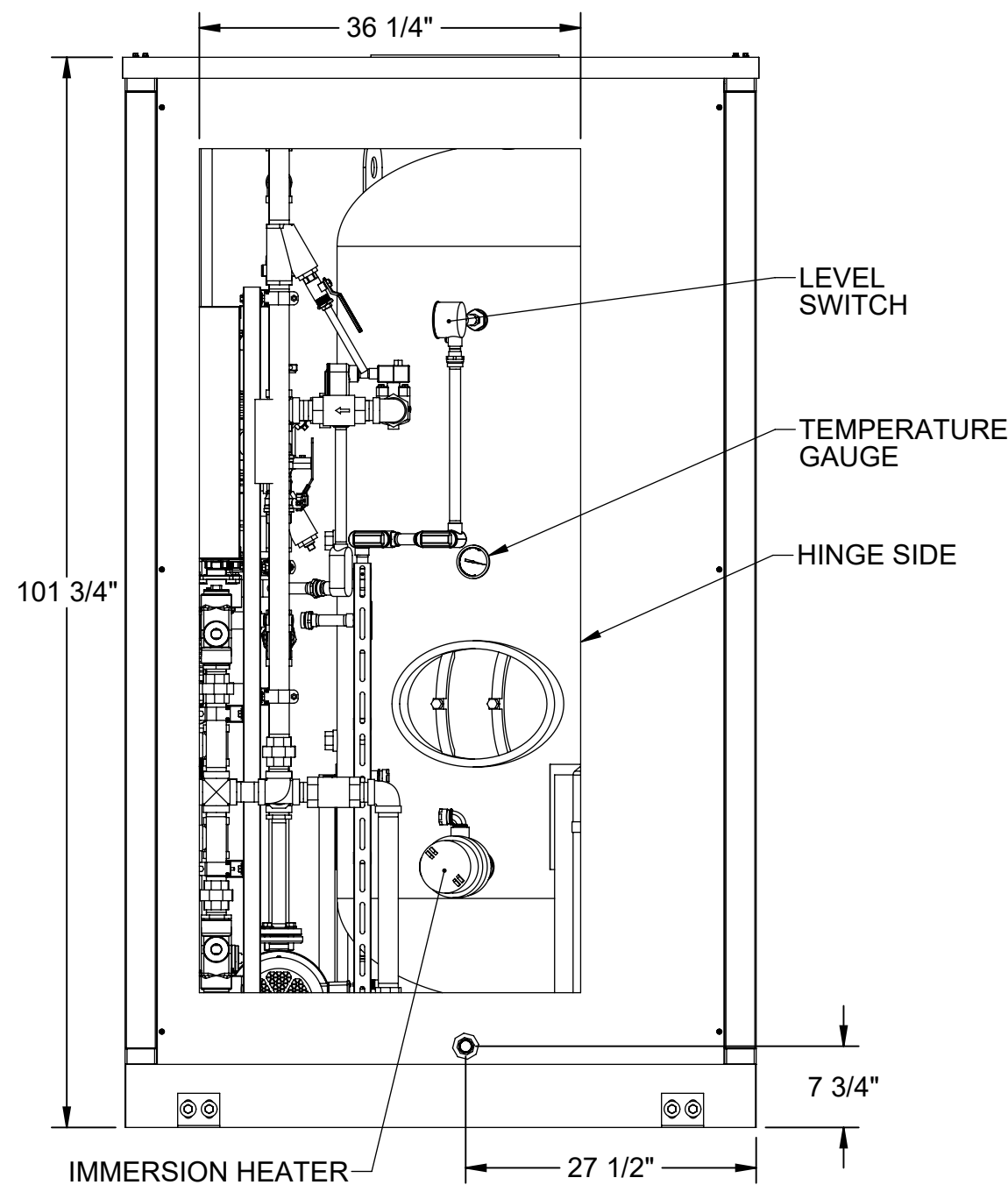
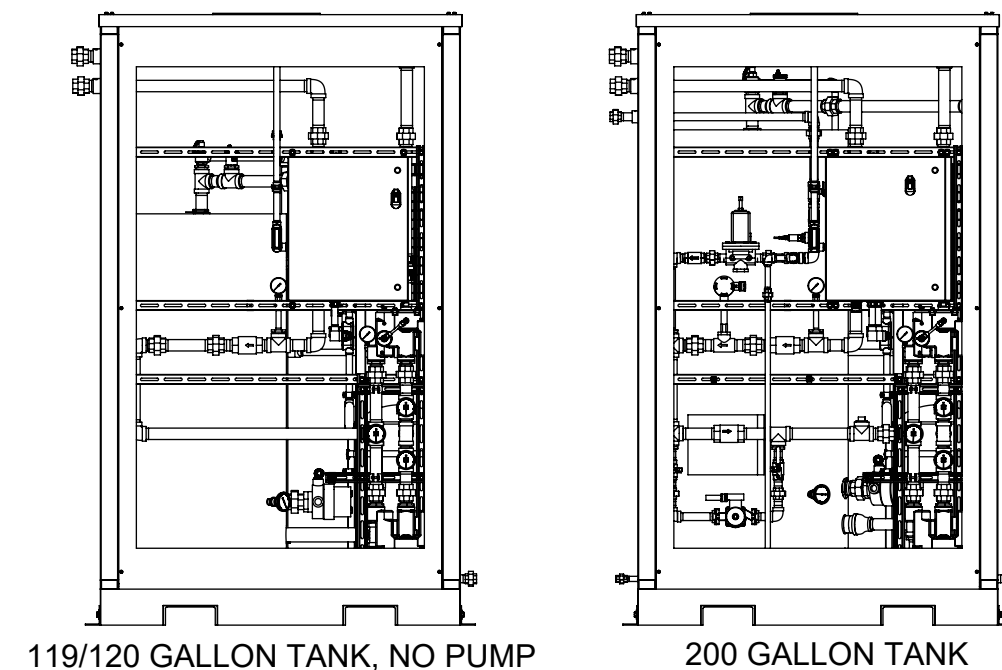
OPTIONS		DWG REF.
PUMP CONFIGURATION	NO PUMP	P5-0
	RECIRCULATION PUMP	P5-1
JUNCTION BOX TYPE RATING	TYPE 4, STEEL	P7-0
	TYPE 4X, 304 SST	P7-1
ALARM (IN USE)	NONE	-
	ISOLATED DRY CONTACTS	P12-3
MIXING VALVE QTY.	SINGLE	P30-1
	DUAL	P30-2
EXPANSION TANK	NON-ASME	P10-T
	ASME	P10-A/E



MODELS WITH RECIRCULATION PUMP OR NO PUMP




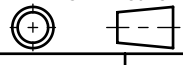
SECTION A-A



THE ATTACHED DESIGNS ARE CONSIDERED TRADE SECRETS AND POTENTIALLY PATENTABLE. IN ACCORDANCE WITH CONFIDENTIALITY AND NON-DISCLOSURE AGREEMENT, THESE DESIGNS IN ACTUAL OR CONCEPTUAL FORMS CANNOT BE DISCLOSED, REPRODUCED OR USED WITHOUT HAWS' EXPRESS WRITTEN CONSENT.

REVISIONS				
REV	DESCRIPTION	ECN	DATE	BY
3	PER ECO	5817	6/9/22	IR

TANK SIZE				
(TANK TEMPERATURES ARE SET AT 165°F FOR USA AND 145°F FOR CANADA)				
TANK SIZE	TANK TEMP.	SHOWER CAPACITY (15 MIN.)	MINIMUM INLET TEMP.	OPTION SELECTED
119G	145°F	1	62°F	
	165°F	1	54°F	
120G	145°F	1	62°F	
	165°F	1	54°F	
200G	145°F	1	35°F	
	165°F	1	32°F	
318G	145°F	2	50°F	
	165°F	2	39°F	
400G	145°F	2	35°F	N/A
	165°F	2	32°F	N/A

CUSTOMER INFO/TAG #:		 1455 KLEPPE LANE SPARKS, NEVADA 89431 USA	
JOB NUMBER:		TITLE ALL-WEATHER EMERGENCY WATER TEMPERING BOOTH	
DRAWN BY:	IR	NOTICE OF PROPRIETARY INFORMATION INFORMATION CONTAINED HEREIN IS THE SOLE PROPERTY OF HAWS CORPORATION AND THIS DOCUMENT AND THE DATA DISCLOSED HEREIN OR HEREWITH IS NOT TO BE REPRODUCED, USED, OR DISCLOSED IN WHOLE OR IN PART TO ANYONE WITHOUT THE PERMISSION OF HAWS CORPORATION.	
DRAWN DATE:	07/26/21	THIRD ANGLE PROJECTION 	
CHECKED BY:	JSLP	GA SH 1 OF 1	
CHECKED DATE:	07/06/22	SCALE SIZE PART NO. 1:16 C 0580001087.D-GA	
APPROVED BY:	IR	REV. 3	
APPROVAL DATE:	07/06/22		

NOTES:

1. DIMENSIONS IN INCHES.
2. ALL TOLERANCES: $\pm 1/2"$
4. ESTIMATED WEIGHT:
DRY: 1300 LB
WET: 4000 LB
5. AREA CLASSIFICATION: ORDINARY
6. AVAILABLE AMBIENT TEMPERATURE RANGES:
-50°F-104°F, 32°F-104°F
7. NOT ALL FEATURES ARE STANDARD
8. RECOMMENDED RECIRCULATION FLOWRATE: 10GPM
9. PRESSURE TRANSMITTER SETPOINT IS TYPICALLY SET TO 30PSI + ELEVATION CHANGE FROM SKID TO HIGHEST SHOWER (1FT = .433PSI)
10. A BACK PRESSURE REGULATOR IS REQUIRED FOR THE FOLLOWING CONDITION: SUPPLY PRESSURE < 30PSI + ELEVATION CHANGE FROM SKID TO HIGHEST SHOWER RATINGS: CONFIGURABLE WITH TYPE 4/4X JUNCTION BOX FOR INDOOR OR OUTDOOR LOCATION
- 11.

OPTIONS		DWG REF.
PUMP CONFIGURATION	BOOSTER/RECIRC W/ VFD	P5-3
JUNCTION BOX TYPE RATING	TYPE 4, STEEL	P7-0
	TYPE 4X, 304 SST	P7-1
ALARM (IN USE)	NONE	-
	ISOLATED DRY CONTACTS	P12-3
MIXING VALVE QTY.	SINGLE	P30-1
	DUAL	P30-2

MODELS WITH VFD RECIRC/BOOSTER PUMP

REVISIONS				
REV	DESCRIPTION	ECN	DATE	BY
3	INITIAL RELEASE	5817	6/9/22	IR

TANK SIZE				
(TANK TEMPERATURES ARE SET AT 165°F FOR USA AND 145°F FOR CANADA)				
TANK SIZE	TANK TEMP.	SHOWER CAPACITY (15 MIN.)	MINIMUM INLET TEMP.	OPTION SELECTED
119G	145°F	1	62°F	
	165°F	1	54°F	
120G	145°F	1	62°F	
	165°F	1	54°F	
200G	145°F	1	35°F	
	165°F	1	32°F	
318G	145°F	2	50°F	
	165°F	2	39°F	
400G	145°F	2	35°F	N/A
	165°F	2	32°F	N/A

TEMPERATURE & PRESSURE RELIEF VALVE

STORAGE TANK (318G SHOWN)
US-165°F
CA-145°F

VACUUM BREAKER

AIR ELIMINATOR

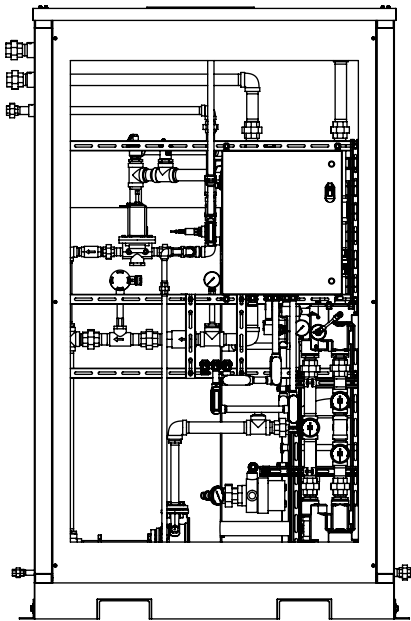
(HI-TEMP DUMP)

3.5kW SPACE HEATER (OPTIONAL)

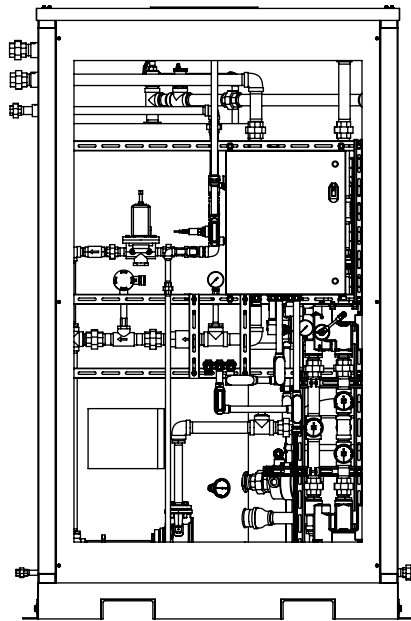
EXPANSION TANK
CUSTOMER TO CHARGE WITH AIR TO PUMP DISCHARGE PRESSURE

TANK DRAIN
1" NPT UNION

SECTION A-A



119/120 GALLON TANK

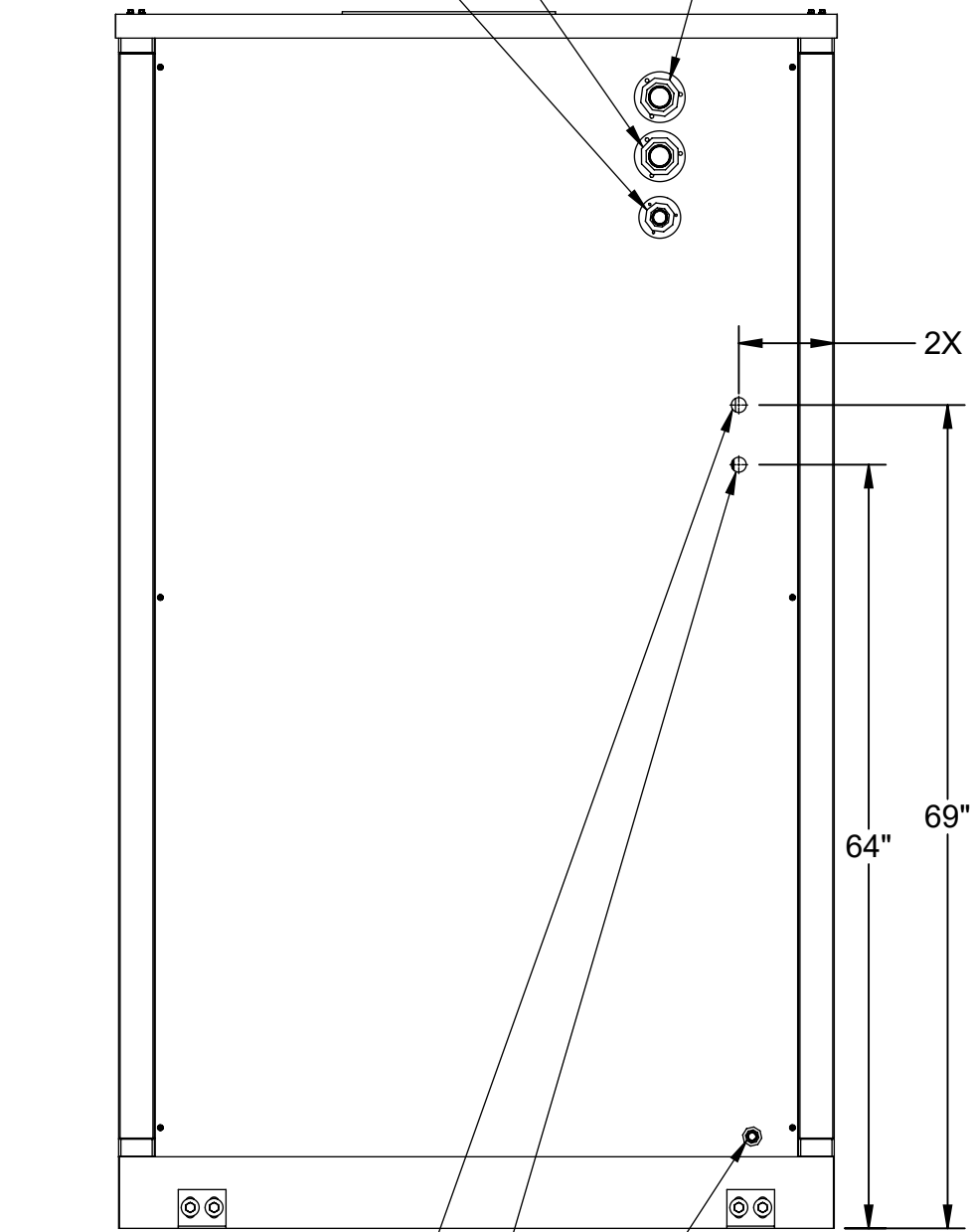


200 GALLON TANK

CUSTOMER CONNECTION
COLD WATER INLET
1-1/2" NPT UNION
95°F MAX

CUSTOMER CONNECTION
TEMPERED WATER OUTLET
1-1/2" NPT UNION
SET TEMP: 85°F

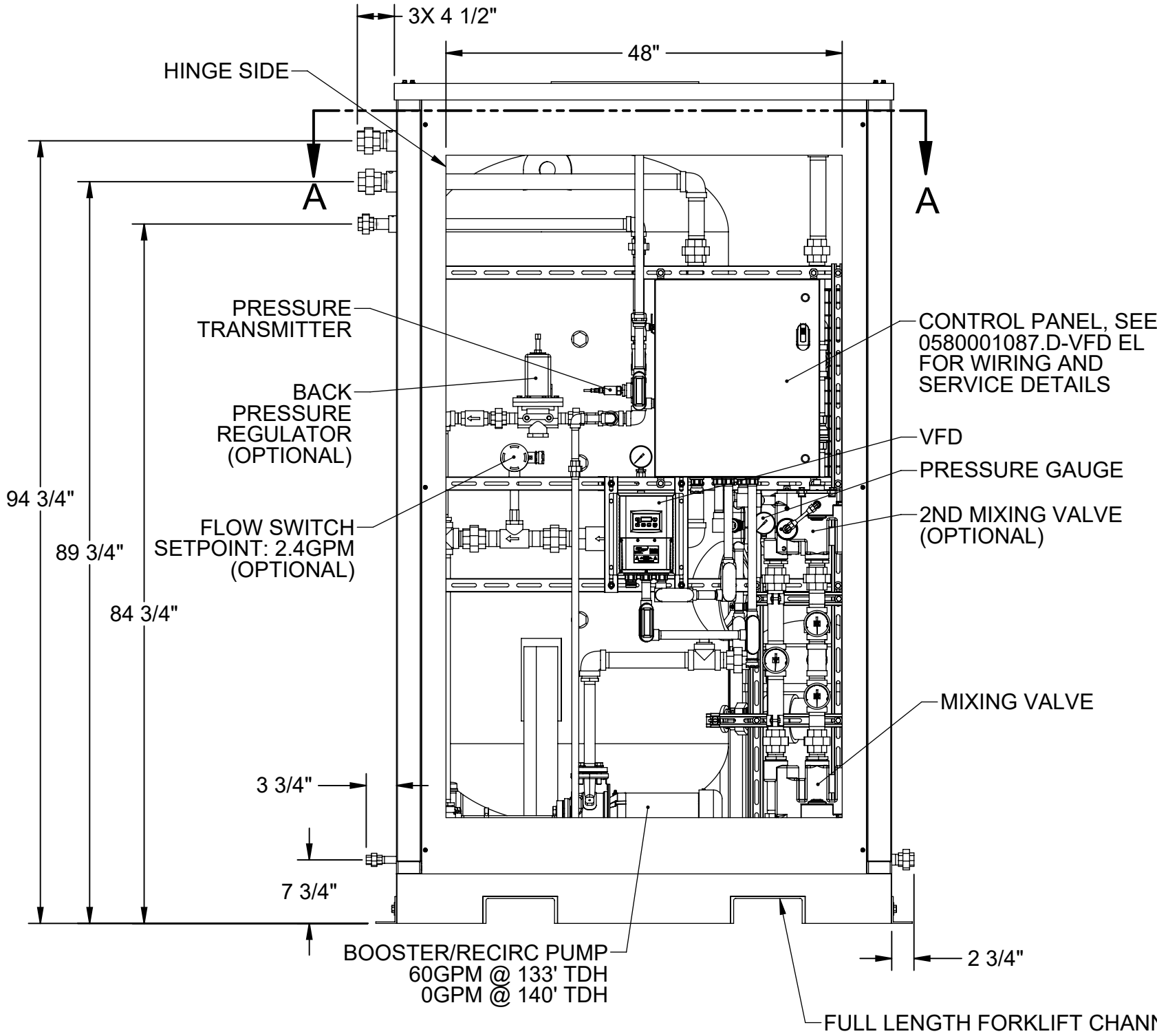
CUSTOMER CONNECTION
RECIRC RETURN INLET
1" NPT UNION



CUSTOMER ENTRY
3/4" CONDUIT
POWER CONNECTION

CUSTOMER ENTRY
3/4" CONDUIT
ALARM DRY CONTACTS

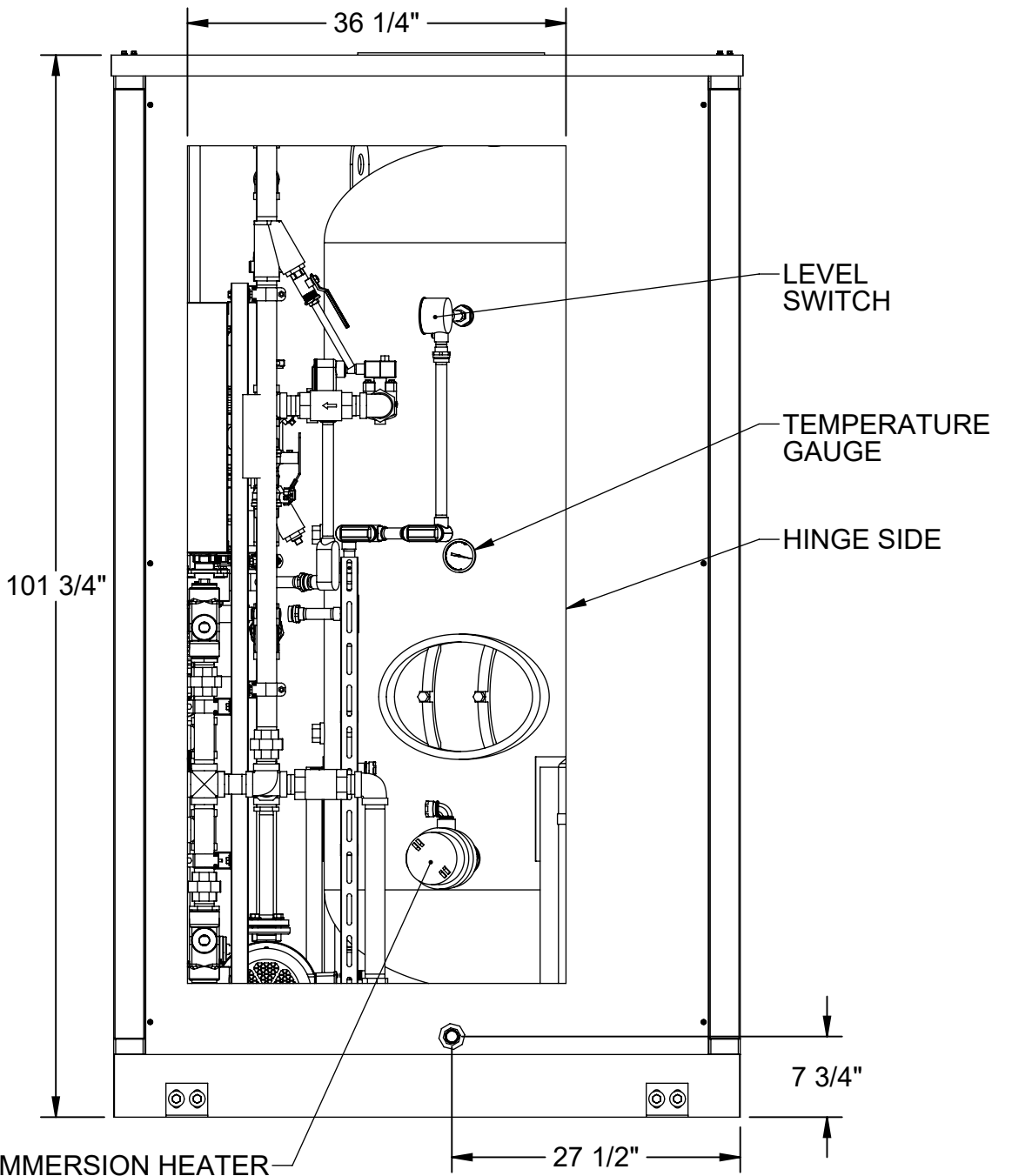
CUSTOMER CONNECTION
HI-TEMP DUMP
1/2" NPT UNION
>95°F



BOOSTER/RECIRC PUMP
60GPM @ 133' TDH
0GPM @ 140' TDH

FULL LENGTH FORKLIFT CHANNELS

THE ATTACHED DESIGNS ARE CONSIDERED TRADE SECRETS AND POTENTIALLY PATENTABLE. IN ACCORDANCE WITH CONFIDENTIALITY AND NON-DISCLOSURE AGREEMENT, THESE DESIGNS IN ACTUAL OR CONCEPTUAL FORMS CANNOT BE DISCLOSED, REPRODUCED OR USED WITHOUT HAWS' EXPRESS WRITTEN CONSENT.



LEVEL SWITCH

TEMPERATURE GAUGE

HINGE SIDE

CUSTOMER INFO/TAG #:

JOB NUMBER:		TITLE	
DRAWN BY:		ALL-WEATHER EMERGENCY WATER TEMPERING BOOTH	
DRAWN DATE:		NOTICE OF PROPRIETARY INFORMATION	
CHECKED BY:		INFORMATION CONTAINED HEREIN IS THE SOLE PROPERTY OF HAWS CORPORATION AND THIS DOCUMENT AND THE DATA DISCLOSED HEREIN OR HEREIN IS NOT TO BE REPRODUCED, USED, OR DISCLOSED IN WHOLE OR IN PART TO ANYONE WITHOUT THE PERMISSION OF HAWS CORPORATION.	
CHECKED DATE:		THIRD ANGLE PROJECTION	
APPROVED BY:		GA	
APPROVAL DATE:		SH 1 OF 1	
SCALE		REV. 3	
SIZE		0580001087.D-GA	
PART NO.			

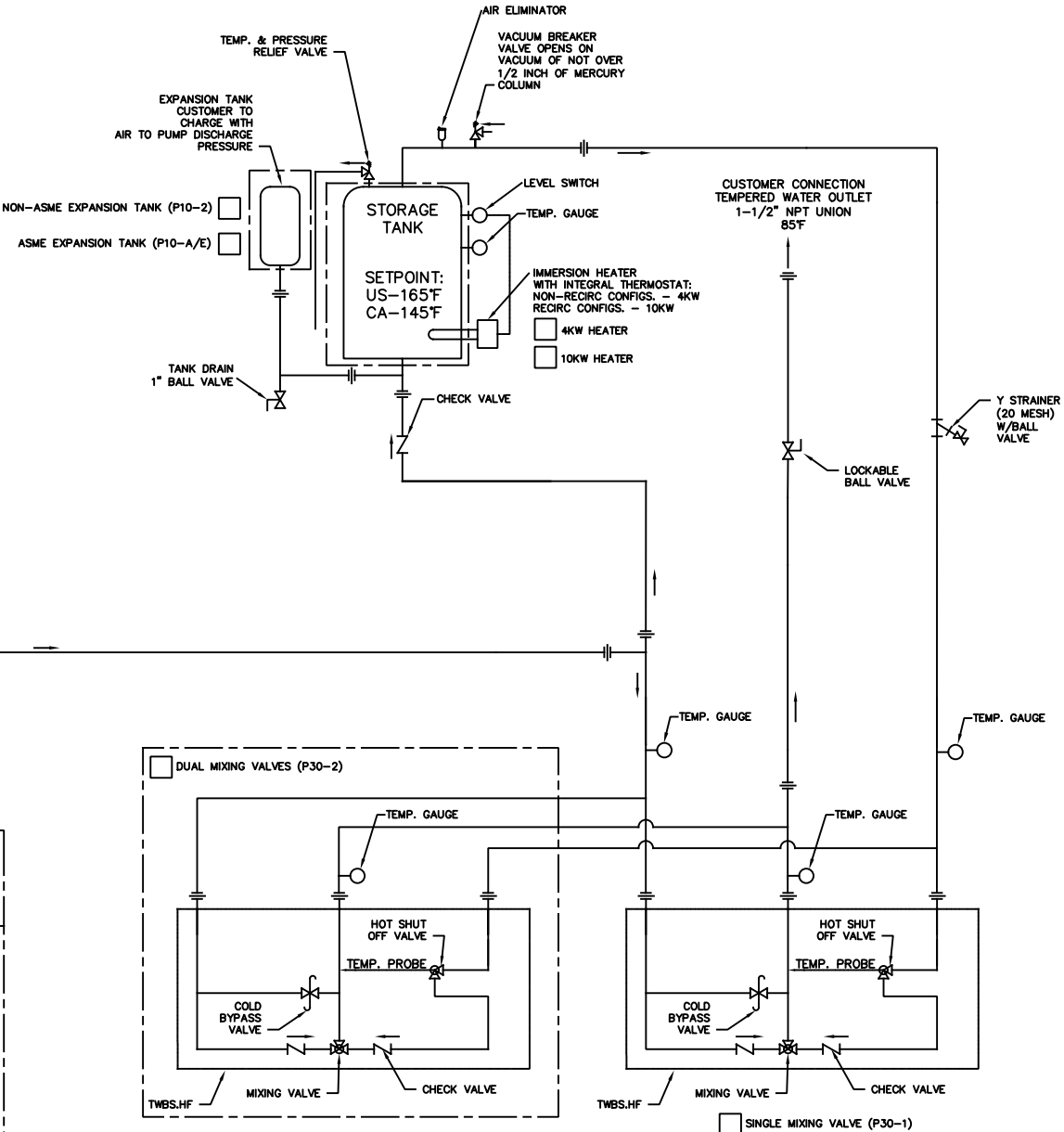
- NOTES:
1. AREA CLASSIFICATION: ORDINARY
 2. AVAILABLE AMBIENT TEMPERATURE RANGE: 32°F - 104°F
 3. SEE TABLE 1 FOR PRESSURE DROP ACCROSS SKID. SHOWERS AND EYEWASHES REQUIRE 30PSI MINIMUM AT THEIR HIGHEST FLOW RATE.
 4. RATINGS: CONFIGURABLE WITH TYPE 4/4X JUNCTION BOX FOR INDOOR LOCATION

REVISIONS				
REV	DESCRIPTION	ECN	DATE	BY
1	FOR RECD		08/18/20	IR
2	FOR RECD		07/06/22	SLP
3	FOR RECD		07/06/22	IR

PRESSURE DROP ACROSS SKID (SINGLE COMBINATION SHOWER FLOWS 30GPM)		
SKID CONFIGURATION	PRESSURE DROP	
60GPM/SST PIPE/2 TWBS	17 PSI	
60GPM/GALV PIPE/2 TWBS	24 PSI	
60GPM/SST PIPE/1 TWBS	30 PSI	
60GPM/GALV PIPE/1 TWBS	37 PSI	
30GPM/SST PIPE/2 TWBS	4 PSI	
30GPM/GALV PIPE/2 TWBS	6 PSI	
30GPM/SST PIPE/1 TWBS	8 PSI	
30GPM/GALV PIPE/1 TWBS	10 PSI	

TABLE 1

TANK SIZE (TANK TEMPERATURES ARE SET AT 165°F FOR USA AND 145°F FOR CANADA)				
TANK SIZE	TANK TEMP.	SHOWER CAPACITY (15 MIN.)	MINIMUM INLET TEMP.	OPTION SELECTED
119G	145°F	1	62°F	
	165°F	1	54°F	
120G	145°F	1	62°F	
	165°F	1	54°F	
200G	145°F	1	35°F	
	165°F	1	32°F	
318G	145°F	2	50°F	
	165°F	2	39°F	
400G	145°F	2	35°F	
	165°F	2	32°F	



THE ATTACHED DESIGNS ARE CONSIDERED TRADE SECRETS AND POTENTIALLY PATENTABLE. IN ACCORDANCE WITH CONFIDENTIALITY AND NON-DISCLOSURE AGREEMENT, THESE DESIGNS IN ACTUAL OR CONCEPTUAL FORMS CANNOT BE DISCLOSED, REPRODUCED OR USED WITHOUT HAWS' EXPRESS WRITTEN CONSENT.

APPROVALS

DATE

08/18/20

DRAWN

IR

CHECKED

SLP

APPROVED

IR

JOB NUMBER

0580001086.D-PID

1455 KLEPPE LANE
SPARKS, NEVADA 89431
USA

8780 - INDOOR EMERGENCY WATER
TEMPERING SKID

THIRD ANGLE PROJECTION

NOTICE OF PROPRIETARY INFORMATION

INFORMATION CONTAINED HEREIN IS THE SOLE PROPERTY OF HAWS CORPORATION AND THIS DOCUMENT AND THE DATA DISCLOSED HEREIN OR HEREWITH IS NOT TO BE REPRODUCED, USED, OR DISCLOSED IN WHOLE OR IN PART TO ANYONE WITHOUT THE PERMISSION OF HAWS CORPORATION.

SCALE

N/A

SIZE

C

PART NUMBER

0580001086.D-PID

REV

3

©2022 Haws Corporation - All Rights Reserved. HAWS® and other trademarks used in these materials are the exclusive property of Haws Corporation.

