

Rosemount 3300 Series with Remote Connection

Introduction	page 1-2
Overview Remote Connection, New Units	page 1-2
Mechanical Installation, New Units	page 1-3
Overview Remote Connection, Field Retrofit	page 1-5
Mechanical Installation, Field Retrofit	page 1-6

This instruction is a supplement to the Rosemount 3300 Series Reference Manual (Document No. 00809-0100-4811).

⚠ WARNING

Explosions could result in death or serious injury:

Verify that the operating environment of the transmitter is consistent with the appropriate hazardous locations certifications.

Before connecting a HART[®]-based communicator in an explosive atmosphere, make sure the instruments in the loop are installed in accordance with intrinsically safe or non-incendive field wiring practices.

Do not remove the gauge cover in explosive atmospheres when the circuit is alive.

⚠ WARNING

Failure to follow safe installation and servicing guidelines could result in death or serious injury:

Make sure only qualified personnel perform the installation.

Use the equipment only as specified in this manual. Failure to do so may impair the protection provided by the equipment.

High voltage that may be present on leads could cause electrical shock:

Avoid contact with leads and terminals.

Make sure the main power to the 3300 transmitter is off and the lines to any other external power source are disconnected or not powered while wiring the gauge.

Probes covered with plastic and/or with plastic discs may generate an ignition-capable level of electrostatic charge under certain extreme conditions. Therefore, when the probe is used in a potentially explosive atmosphere, appropriate measures must be taken to prevent electrostatic discharge.

Rosemount 3300 Series

INTRODUCTION

This document covers how to mount the remote connection for the Rosemount 3300 Guided Wave Radar Series ordered with Model Code 330XXXXXXXXXXXXXXXXXXBX, see “Mechanical Installation, New Units” on page 1-3, and for the Remote Connection Spare Part Kit (03300-3001-0001) (ordered separately), see “Mechanical Installation, Field Retrofit” on page 1-6. For all other installation details, please see the Rosemount 3300 Series Quick Installation Guide (Document No. 00825-0100-4811).

OVERVIEW REMOTE CONNECTION, NEW UNITS

The remote housing assembly is shipped with the transmitter head mounted on the probe and the remote connection in a separate box.

The transmitter head must have the remote connection installed before it will function.

The parts in the shipping unit consist of:

- Transmitter head mounted on probe
- Remote connection
- Bracket kit
 - Bracket (1 pcs)
 - Clamping bracket (4 pcs)
 - U-bolt (2 pcs)
 - M6 screw (3 pcs)
 - M6 nut (4 pcs)



Transmitter head mounted on probe



Remote connection



Bracket kit

MECHANICAL INSTALLATION, NEW UNITS



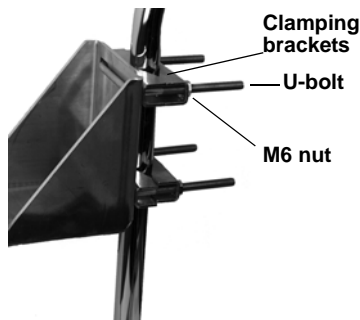
Remove the Transmitter Head from the probe

Remove the Transmitter Head from the probe by unscrewing the M50 nut.



Mount the probe in the tank

Mount the probe in the tank by following the steps covered in the Rosemount 3300 Series Quick Installation Guide (Document No. 00825-0100-4811).



Mount the bracket to the pole

Mount the bracket to the pole, making sure the distance between the probe and bracket does not exceed the length of the remote connection.

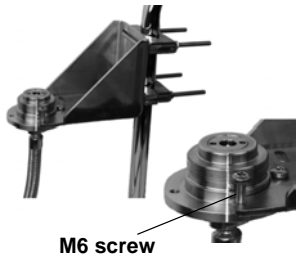
1. Put the two U-bolts through the holes of the bracket. Several holes are available for vertical/horizontal pipe mounting.
2. Put the clamping brackets on the U-bolts and around the pipe.
3. Use the supplied nuts to fasten the bracket to the pipe.



Open the Remote Connection

Open the remote connection by unscrewing the M50 nut.

Rosemount 3300 Series



Fasten the housing support to the bracket

Fasten the housing support to the bracket using the M6 screws. The screws are threaded through the top of the mounting bracket and into the housing support.



Mount the probe housing on the probe

Mount the probe housing on the probe, making sure that the M50 nut is properly tightened.

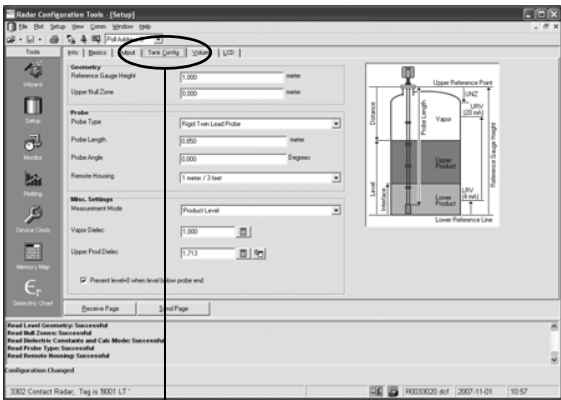


Connect the Transmitter Head on the housing support

Connect the Transmitter Head on the housing support, following the steps covered in Rosemount 3300 Series Quick Installation Guide (Document No. 00825-0100-4811), making sure that the M50 nut is properly tightened.

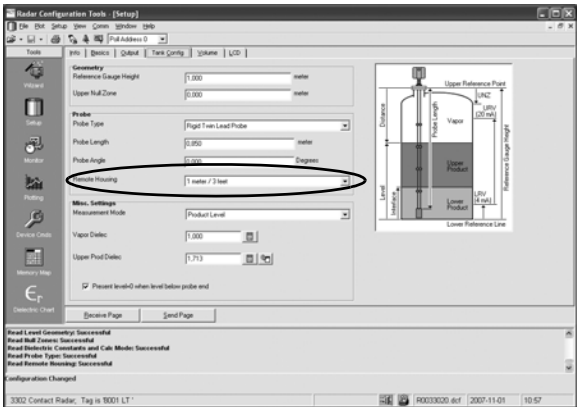
Configure via Radar Configuration Tools

Follow the steps covered in Rosemount 3300 Series Quick Installation Guide (Document No. 00825-0100-4811) to configure the transmitter using the Radar Configuration Tools (RCT). The remote housing setting is configured at the factory. For options, check the setting under “Setup-Tank Config”.



Select Setup and then the tab Tank Config

A setting for Remote Housing should be selected.



OVERVIEW REMOTE CONNECTION, FIELD RETROFIT

To upgrade a currently installed 3300 transmitter to a remote housing, the embedded software needs revision 10 or later, and the Spare Part Kit (03300-3001-000X) must be ordered.

Please note that the transmitter head will not function unless the remote connection is configured in Radar Configuration Tools (RCT).

The Spare Part Kit consists of:

- Remote connection
- Bracket kit
 - Bracket (1 pcs)
 - Clamping bracket (4 pcs)
 - U-bolt (2 pcs)
 - M6 screw (3 pcs)
 - M6 nut (4 pcs)



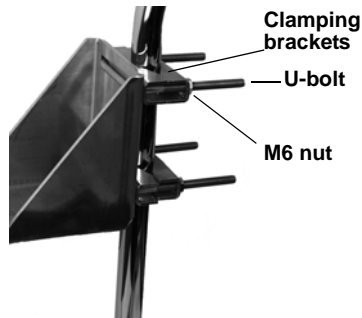
Remote connection



Bracket kit

Rosemount 3300 Series

MECHANICAL INSTALLATION, FIELD RETROFIT



Mount the bracket to the pole

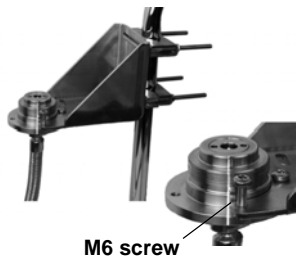
Mount the bracket to the pole, making sure the distance between the probe and bracket does not exceed the length of the remote connection.

1. Put the two U-bolts through the holes of the bracket. Several holes are available for vertical/horizontal pipe mounting.
2. Put the clamping brackets on the U-bolts and around the pipe.
3. Use the supplied nuts to fasten the bracket to the pipe.



Open the Remote Connection

Open the remote connection by unscrewing the M50 nut.



Fasten the housing support to the bracket

Fasten the housing support to the bracket using the M6 screws. The screws are threaded through the top of the mounting bracket and into the housing support.



Remove the Transmitter Head from the probe

Remove the Transmitter Head from the probe by unscrewing the M50 nut.



M50 nut



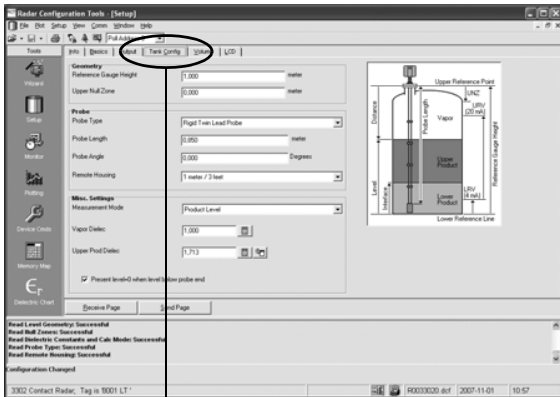
M50 nut

Mount the probe housing on the probe

Mount the probe housing on the probe, making sure that the M50 nut is properly tightened.

Connect the Transmitter Head on the housing support

Connect the Transmitter Head on the housing support, following the steps covered in Rosemount 3300 Series Quick Installation Guide (Document No. 00825-0100-4811), making sure that the M50 nut is properly tightened.

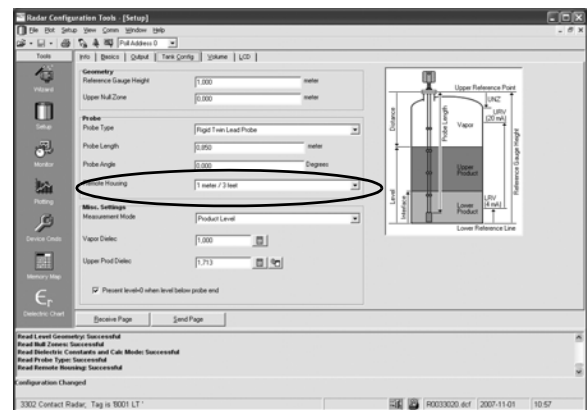


Select Setup and then the tab Tank Config

Select the corresponding length of the remote connection.

Configure via Radar Configuration Tools

Follow the steps covered in Rosemount 3300 Series Quick Installation Guide (Document No. 00825-0100-4811) to configure the transmitter using the Radar Configuration Tools (RCT). The remote housing setting is located under "Setup-Tank Config". Select the corresponding length of the remote connection.



NOTE

This option is only available for embedded software revision 10 and above.

*Rosemount and the Rosemount logotype are registered trademarks of Rosemount Inc.
PlantWeb is a registered trademark of one of the Emerson Process Management group of companies.
Teflon, VITON, and Kalrez are registered trademarks of DuPont Performance Elastomers.
Asset Management Solutions is a trademark of Emerson Process Management.
All other marks are the property of their respective owners.*

Standard Terms and Conditions of Sale can be found at www.rosemount.com/terms_of_sale

Emerson Process Management

Rosemount Inc.

8200 Market Boulevard
Chanhassen, MN 55317 USA
T (U.S.) 1-800-999-9307
T (International) (952) 906-8888
F (952) 949-7001

www.rosemount.com

Emerson Process Management Shared Services Ltd.

Heath Place
Bognor Regis
West Sussex PO22 9SH
England
Tel 44 (1243) 863121
Fax 44 (1243) 867554

Emerson Process Management Asia Pacific Private Limited

1 Pandan Crescent
Singapore 128461
Tel (65) 777-8211
Fax (65) 777-0947
Enquiries@AP.Emersonprocess.com



EMERSON
Process Management