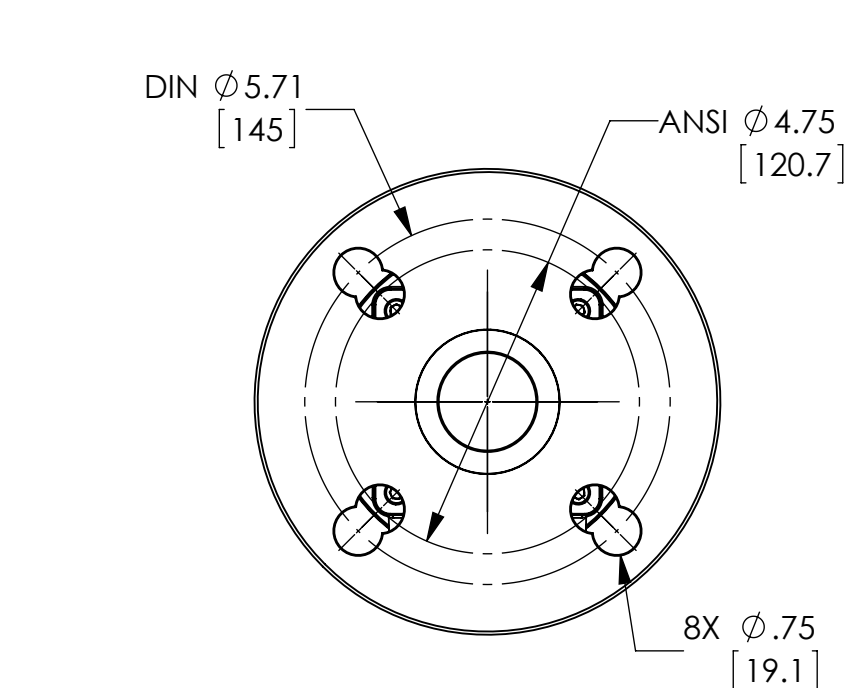
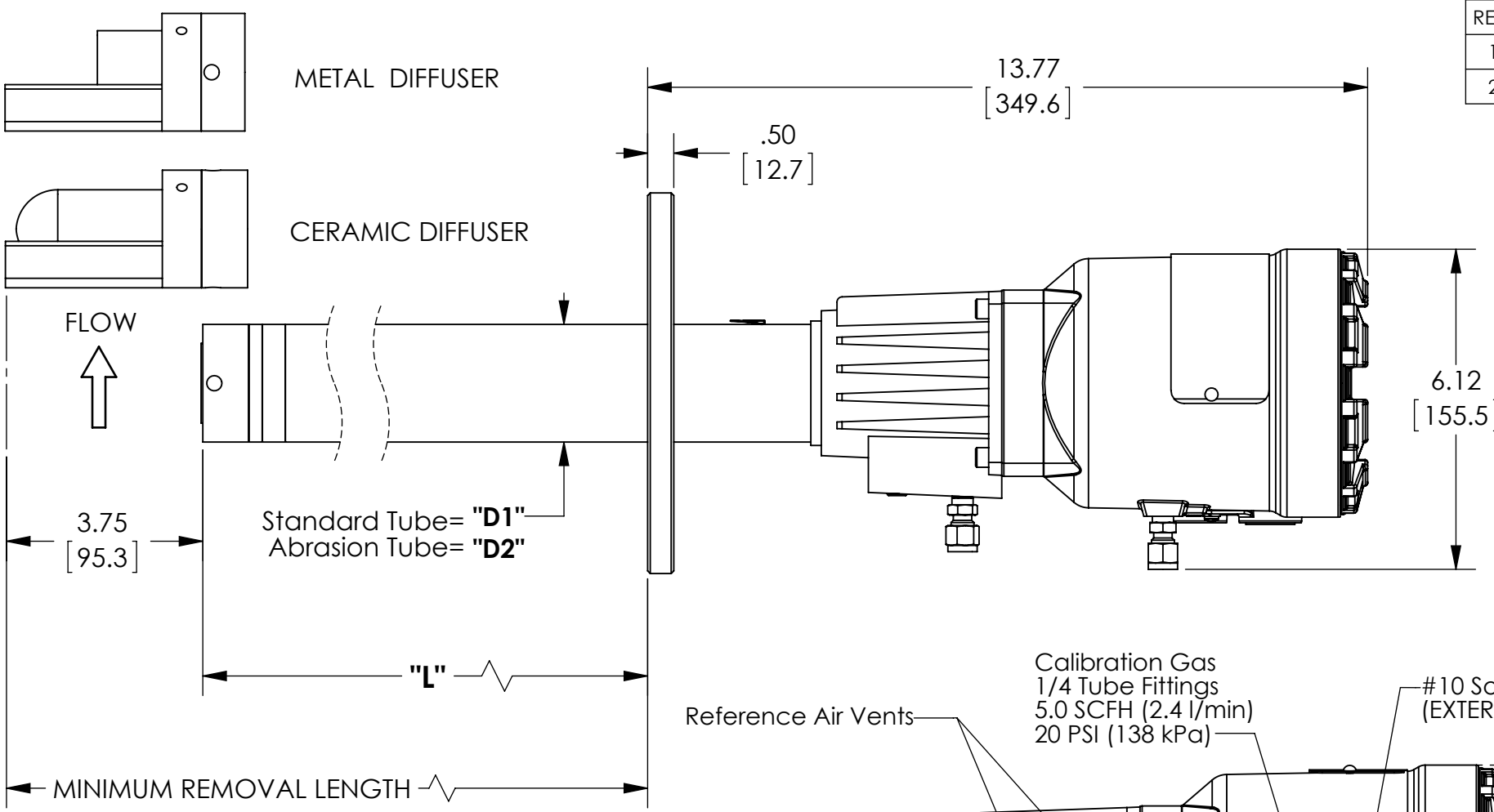
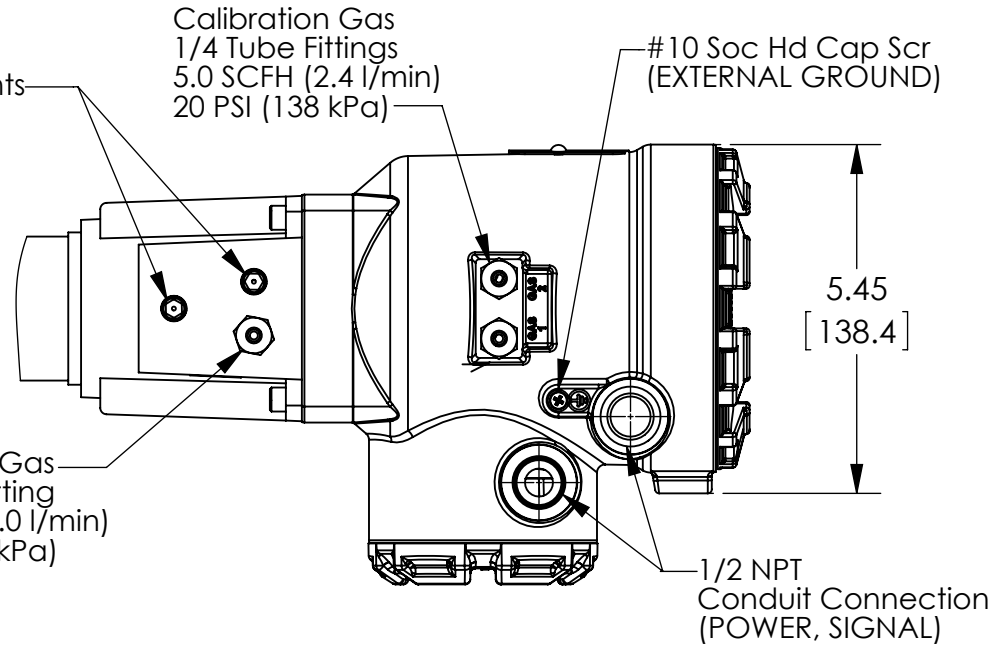


| REVISIONS | | | | |
|-----------|----------|-------------------------|---------|----|
| REV. | ECO# | DESCRIPTION | DATE | BY |
| 1 | CMB10844 | INITIAL RELEASE | 3/1/13 | SM |
| 2 | CMB11113 | SHEET TWO VIEWS UPDATED | 7/10/14 | MS |

During assembly align deflector to face flow as shown.



Separate ANSI and DIN gaskets provided.



| PROBE | "L1" | "D1" | "D2" |
|-------|-------|------|------|
| 18in | 16.1 | 2.25 | 2.38 |
| 3ft | 34.1 | 2.25 | 2.38 |
| 6ft | 70.1 | 2.25 | 2.38 |
| 9ft | 106.1 | - | 2.38 |
| 12ft | 142.1 | - | 2.38 |
| 15ft | 177.7 | - | 2.38 |
| 18ft | 214.1 | - | 2.38 |

- UNLESS OTHERWISE SPECIFIED DIM. ARE IN INCH/[MM]**
- DIMENSIONS AND TOLERANCING PER ASME Y14.5M-1994.
 - DIMENSIONAL LIMITS APPLY AFTER PLATING/FINISH.
 - REMOVE BURRS AND SHARP EDGES: MAX = .020 / [0.5].
 - CHAMFER OR DEBURR HOLES: MAX = .010 / [0.25].
 - MACHINED FILLET RADIUS: .020 / [0.5].
 - MACHINED SURFACE FLAT WITHIN .001 IN/IN or [0.25mm/mm]; OTHER SURFACE FLAT WITHIN .005 IN/IN or [0.127 mm/mm]
 - CONCENTRICITY MACH. SURF. TIR WITHIN 1/2 SUM OF DIAM. TOLERANCE, .001 / [0.025] MIN.
 - SURFACE FINISHES: 125 uIN or [3.2 um]
 - TOLERANCES DECIMALS ARE:
- | | | | |
|--|--------------|--------------|-----------|
| | INCH | mm | ANGULAR |
| | X.X ± .030 | X.X ± 0.8 | ∠ ± 0°30' |
| | X.XX ± .010 | X.XX ± 0.25 | |
| | X.XXX ± .005 | X.XXX ± 0.13 | |

PROPRIETARY AND CONFIDENTIAL
 THE INFORMATION CONTAINED IN THIS DRAWING IS THE SOLE PROPERTY OF ROSEMOUNT ANALYTICAL INC. ANY REPRODUCTION IN PART OR AS A WHOLE WITHOUT THE WRITTEN PERMISSION OF ROSEMOUNT ANALYTICAL INC. IS PROHIBITED.

| APPROVALS | | |
|-----------|------------|---------|
| | NAME | DATE |
| DRAWN | MS | 2/29/13 |
| CHECKED | S. Miesiak | 2/29/13 |
| ENG APPR. | Stojkov | 3/1/13 |

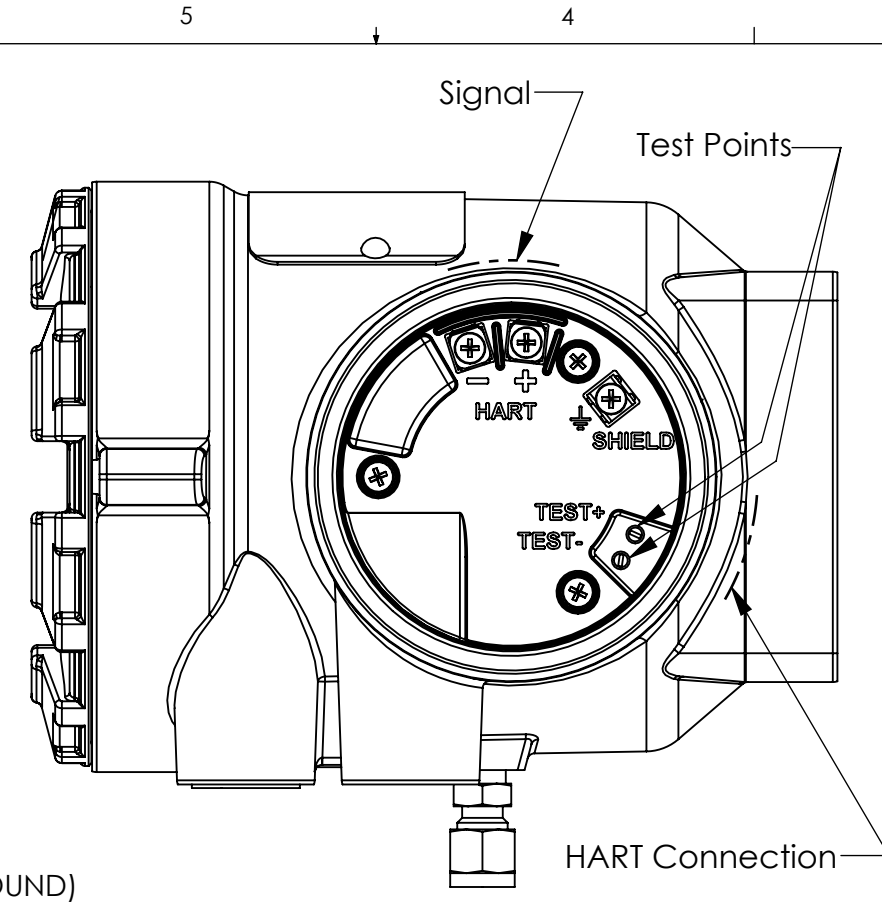
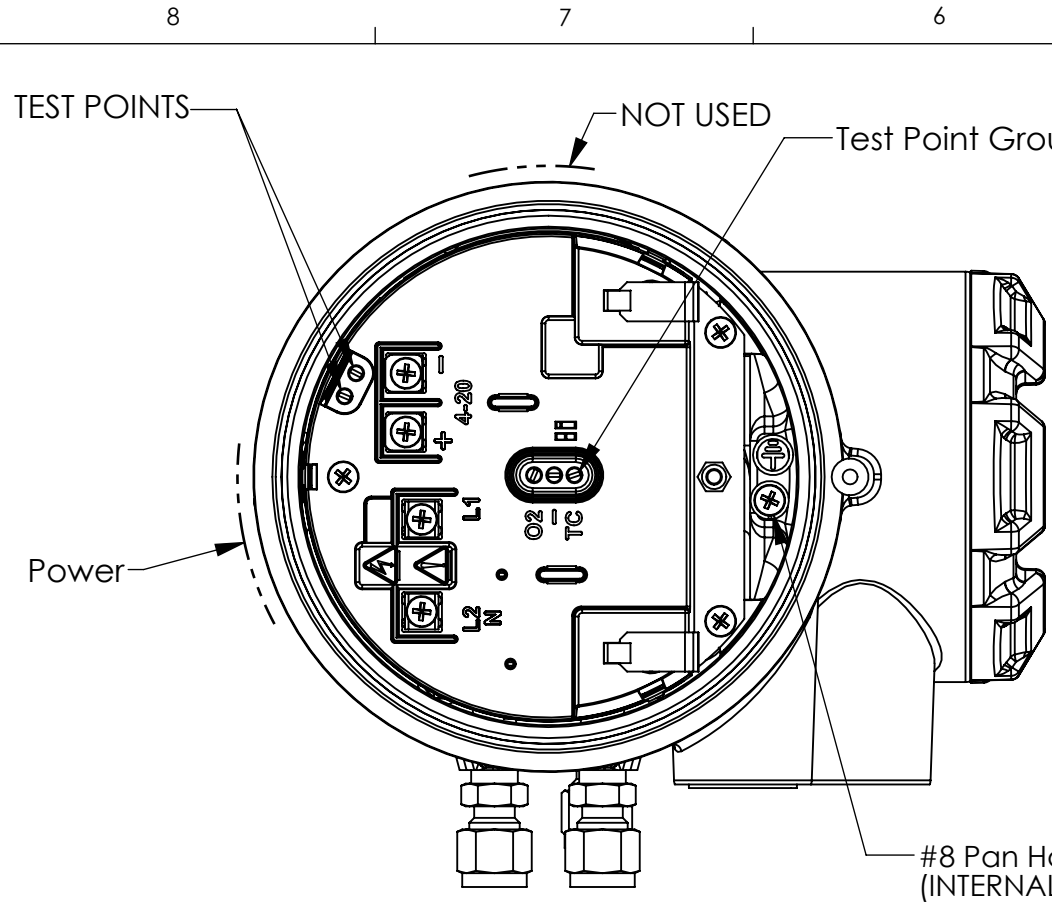
DOCUMENTED ON 3D CAD with SolidWorks.
 Solids File: 00_6888 Probe
 Drawing File: 6R00157
 WHERE USED: -
 DO NOT SCALE DRAWING

ROSEMOUNT ANALYTICAL INC.

TITLE: INSTALLATION DRAWING, 6888A TRANSMITTER, ACCESSORY HSG

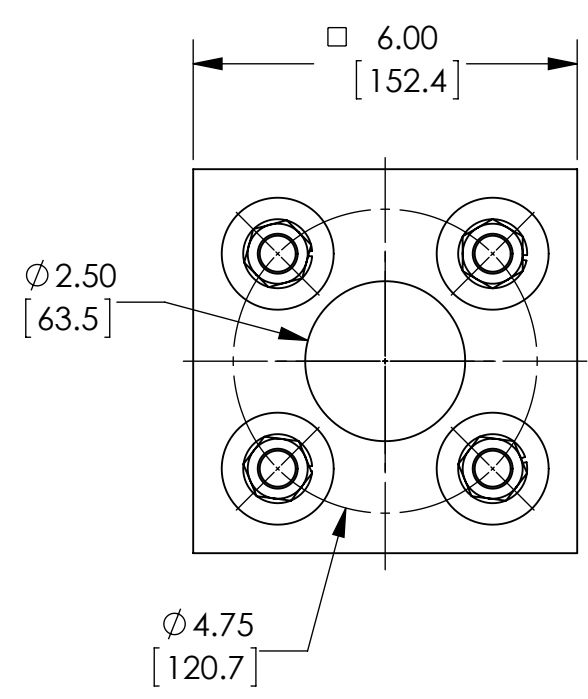
| | | |
|------------------|----------------------------|-----------------|
| SIZE B | DWG. NO. 6R00157 | REV 2 |
|------------------|----------------------------|-----------------|

Part No.: N/A SHEET 1 OF 2

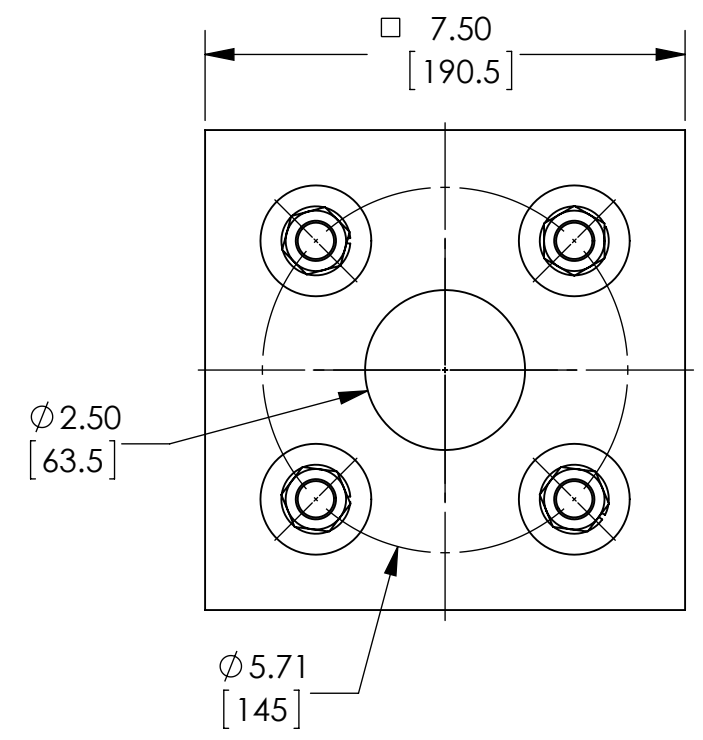
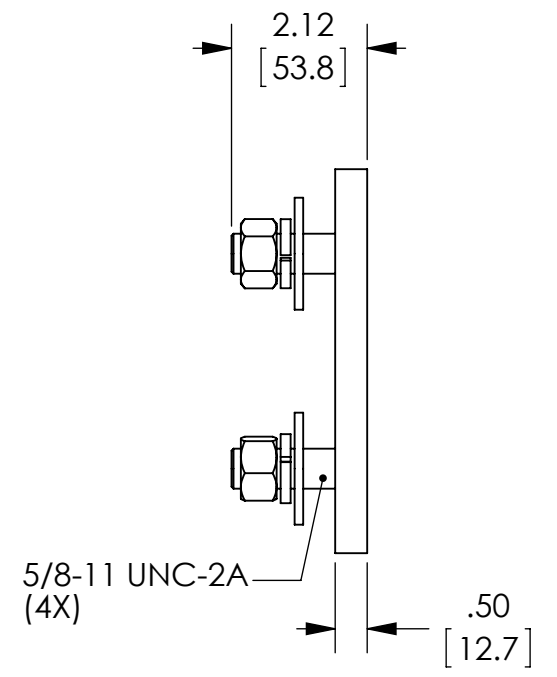


| REVISIONS | | | | |
|-----------|-----|-------------|------|----|
| REV. | RN# | DESCRIPTION | DATE | BY |
| - | - | See Sheet 1 | - | - |

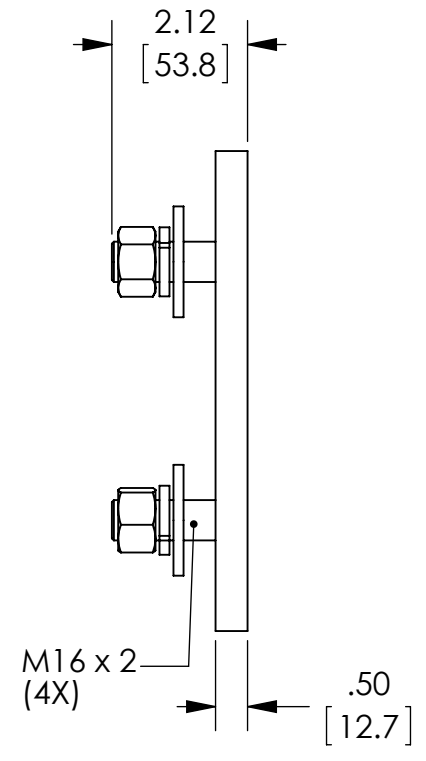
**TRANSMITTER PROBE
FIELD CONNECTIONS**



SQUARE WELD PLATE, ANSI PATTERN



SQUARE WELD PLATE, DIN PATTERN



PROPRIETARY AND CONFIDENTIAL
 THE INFORMATION CONTAINED IN THIS
 DRAWING IS THE SOLE PROPERTY OF
 ROSEMOUNT ANALYTICAL INC. ANY
 REPRODUCTION IN PART OR AS A WHOLE
 WITHOUT THE WRITTEN PERMISSION OF
 ROSEMOUNT ANALYTICAL INC. IS
 PROHIBITED.

| | | |
|--|----------------------------|-----------------|
| ROSEMOUNT ANALYTICAL INC. | | |
| TITLE: INSTALLATION DRAWING, 6888A TRANSMITTER, ACCESSORY HSG | | |
| SIZE B | DWG. NO. 6R00157 | REV 2 |
| DO NOT SCALE DRAWING | | SHEET 2 OF 2 |