

Options:

- Two switch elements can be mounted to a housing if a DPDT application is required.

With MEI's dedication and promise to service, the new MEI-SDS detector switch will prove to be a leader in today's standards.

For pricing and order information, call us at (316) 721-4214.

**FROM ALL OF US AT MEI,
WE THANK YOU FOR
YOUR BUSINESS!!!**

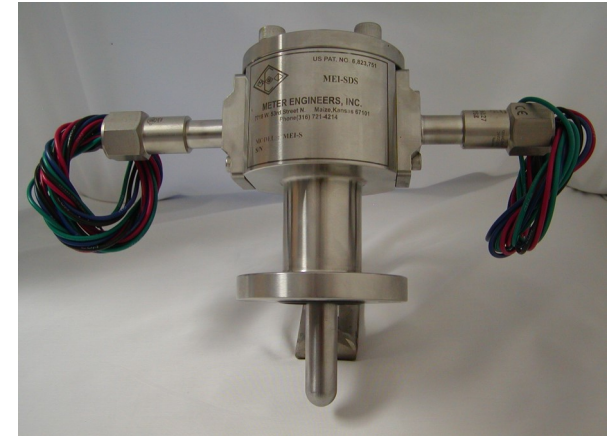
"YOUR ONE STOP PROVER STOP SINCE 1976"

STAY CONNECTED WITH US ON THE WEB!

WWW.METERENGINEERS.COM



Meter Engineers, Inc.
1600 E. Tigua
Kechi, Kansas 67067

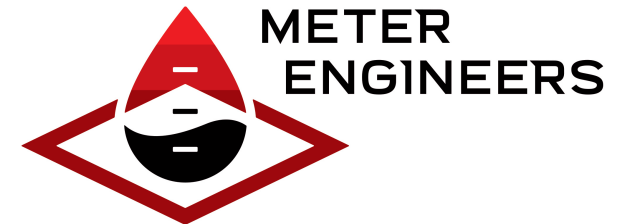


US Pat. No. 6,823,751

MEI-SDS

Sphere Detection Switch

Class 1, Div 1 and Hermetic Sealed



1600 E. Tigua Kechi, Kansas 67067
Phone: (316) 721-4214 (800) 424-7956
Fax: (316) 721-4217

WWW.METERENGINEERS.COM

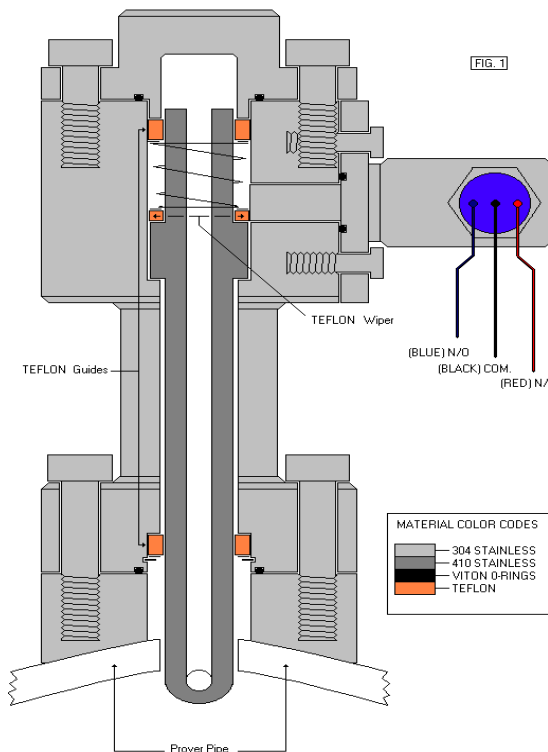
We have combined all of the best technology into one switch. It's adaptability to any switch base, with little or no additional expense, makes it a good economical choice.

Outstanding Qualities:

- TEFLON bushing guided for smooth activation. There are no metal-to-metal friction points. (See Fig. 1)
- Self-purging probe eliminates the need for bleeding air from the switch housing. Also, equalizes internal pressure in the switch housing to eliminate pressure resistance. (See Fig. 1)
- Self-cleaning - Wiper blade that travels past the magnetic switch, before the activation surface passes, to remove any metallic material that may build up in the magnetic field. (See Fig. 1)
- No expensive extensions for underground applications. Just add a 1/2" rigid conduit riser to bring the wire termination box to a desired height.
- The electrical elements have a UL and ATEX Class 1, Div 1 rating and they are hermetically sealed.

- No adjustments make this switch easy to replace and very tamper proof.
- Low maintenance (easy to install TEFLON bushing replacement kits.)

- Adaptability – Adaptable to any switch base on the market with little or no additional expense. (Picture below of some adapted switches)



- Switch Element Performance
 Repeatability: .002" (.05 mm) Typical
 Response time: 8 milliseconds
 Operating temperature: -40 deg. F to 221 deg. F
- All detector switches are hydrostatic tested to 1800 P.S.I. Higher pressure test can be done at customer request.
- Every switch mechanism is factory tested for accuracy.